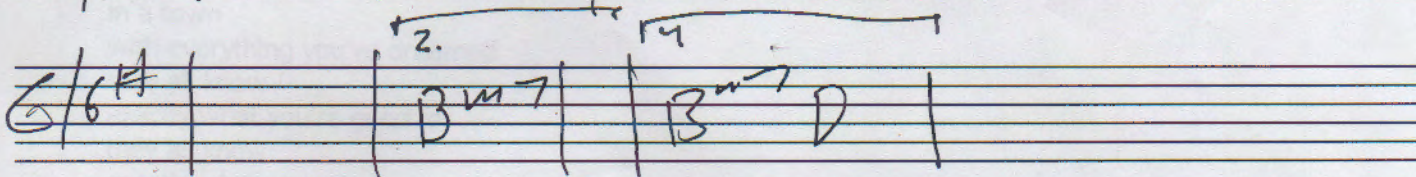
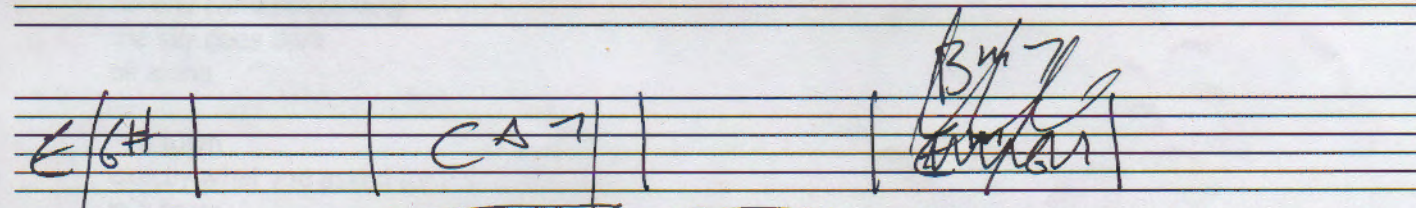
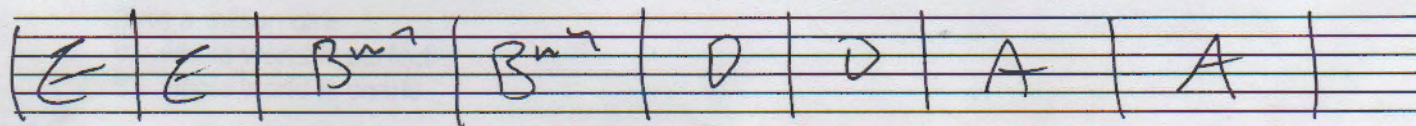
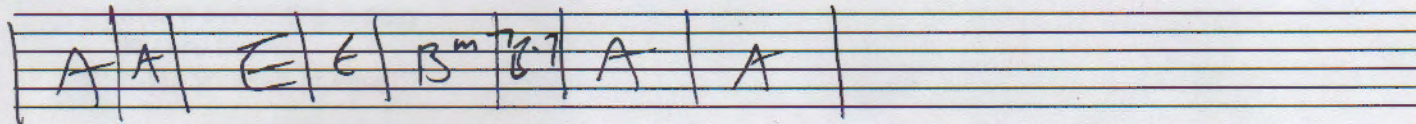
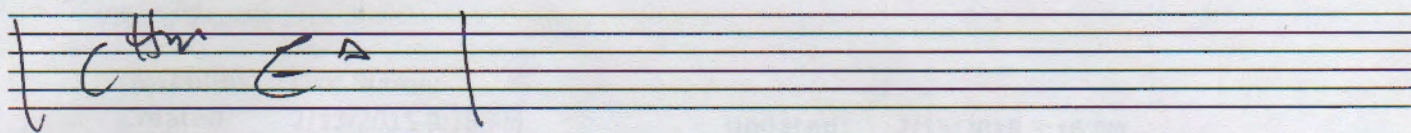


# W A Town







# TEETH BUT DIDN'T BITE

Handwritten musical notation for the song "Teeth But Didn't Bite". The notation is written on a grand staff with five systems of two staves each. The notation includes notes, rests, and fingerings, with chord names (E, G, A, E<sup>v</sup>, D) written above the staves. The notation is written in a style typical of guitar tablature.

**System 1:** Chord E. Notes: 00 20 32x | 20 2 0 1 2 | 00 20 32x | 33 0 5 5 5. Chords G and A are indicated above the final measure.

**System 2:** Chord G. Notes: 3 3 3 3 3 3 | 5 5 5 5 5 5 | 7 7 7 7 7 7 | 7 7 7 7 7 7. Chords A and E<sup>v</sup> are indicated above the first and second measures.

**System 3:** Notes: 3 3 3 3 3 3 | 5 5 5 5 5 5 | 0 0 20 32x | 0 0 20 32x. Chords G, A, and E<sup>v</sup> are indicated above the first, second, and fourth measures.

**System 4:** Notes: 3 3 3 3 3 3 | 5 5 5 5 5 5 | 0 0 7 9 10x | 0 0 7 9 10 10. Chord D is indicated above the first measure.

**System 5:** Notes: 5 5 5 7 | 7 7 7 7 7 7 | 3 0 3 0 3 3 0 3 0 3 | 3 0 3 3 0 3 3. Chords D, A, and A are indicated above the first, second, and fourth measures.

Additional markings include "sl.", "E<sup>v</sup>?", "Call 2", and "1, 2, 4" written near the notes.